

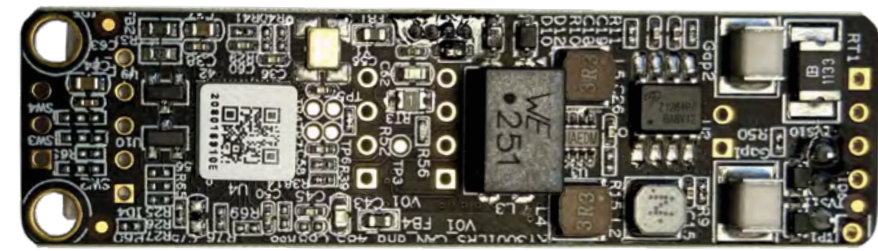
ANY3112 AUTBUS/CAN conversion module

ANY3112 is a conversion module from AUTBUS to CAN based on the high performance AUTBUS SoC chip KY3001LRS. The product is used for devices with CAN interfaces to connect to AUTBUS network, and seamlessly migrate from CAN network to high-speed AUTBUS network.

ANY3112 module has an AUTBUS port, a CAN port, and a DC power supply port. It is required to be used with ANY3822, the companion interface module of AUTBUS. The link power supply module ANY3811 is an option for delivering power and data on a single twisted pair wire of AUTBUS.

ANY3822 companion interface module is designed for amplifying signals, coupling signals to and from the AUTBUS network through the transformer.

ANY3811 link power supply module provides an option for transmission data and power simultaneously on a single twisted pair wire of AUTBUS.



ANY3112



ANY3822



ANY3811

Product characteristics

AUTBUS

- Connector type: 2.54 pin connector
- ANY3822 companion module is required
- 100 Mbps @ 500 m

CAN

- Compatible with CAN 2.0B
- Connector type: 2.54 pin connector
- Signal level: comply with ISO11898
- Bitrate: 250 kbps, 500 kbps, 1 Mbps
- Configurable with ATB-config

Indicator

- Power LED
- Working status LED

Power supply

- Voltage range: DC 12 V
- Power: < 2 W
- Protection: overvoltage, overcurrent and reverse connection

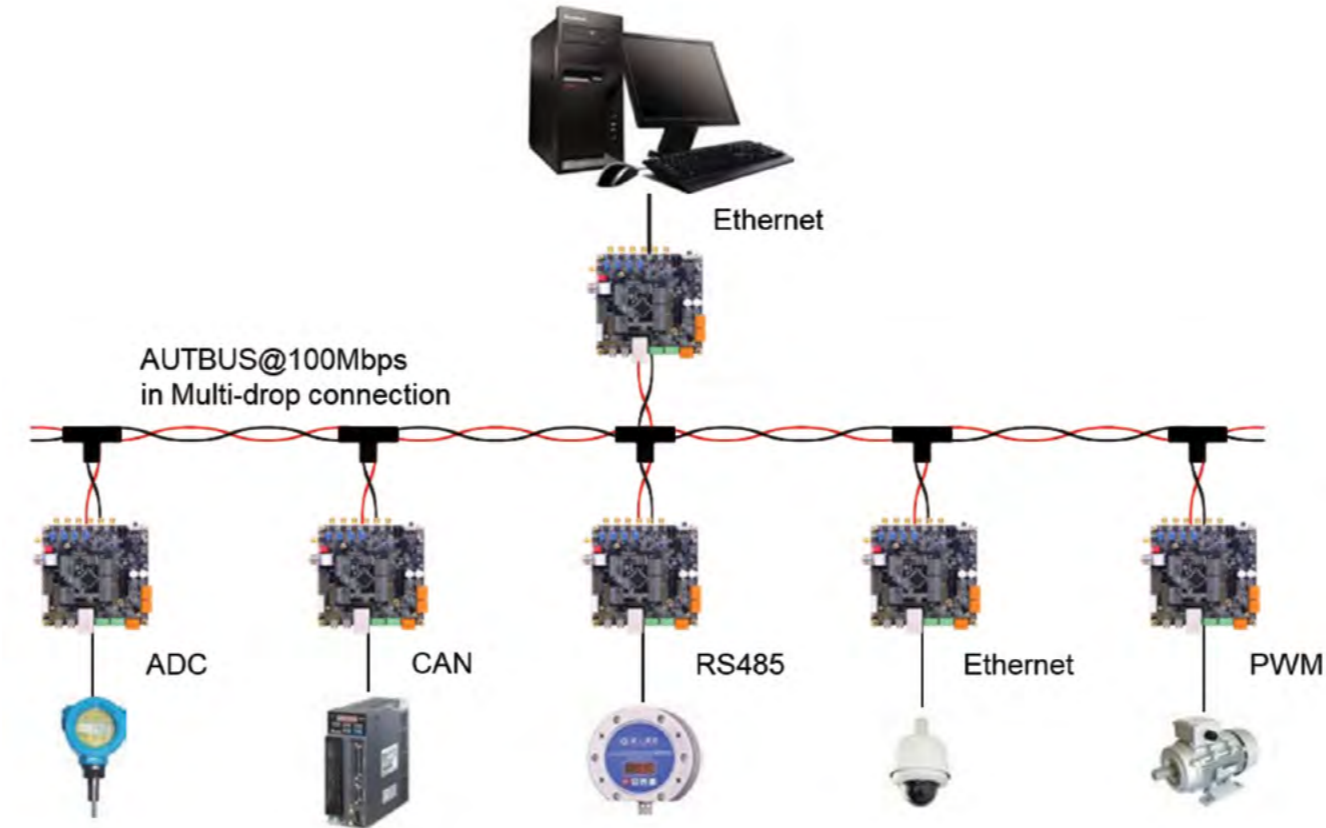
Environmental conditions

- Working temperature: -40°C ~ 85°C
- Storage temperature: -40°C ~ 85°C
- Transport temperature: -40°C ~ 85°C
- Humidity range: 95% (without condensation)
- Altitude: below 3,500 m

ANY3112

Dimension: 65 mm x 18 mm x 16 mm)
Weight: <100 g

Reference



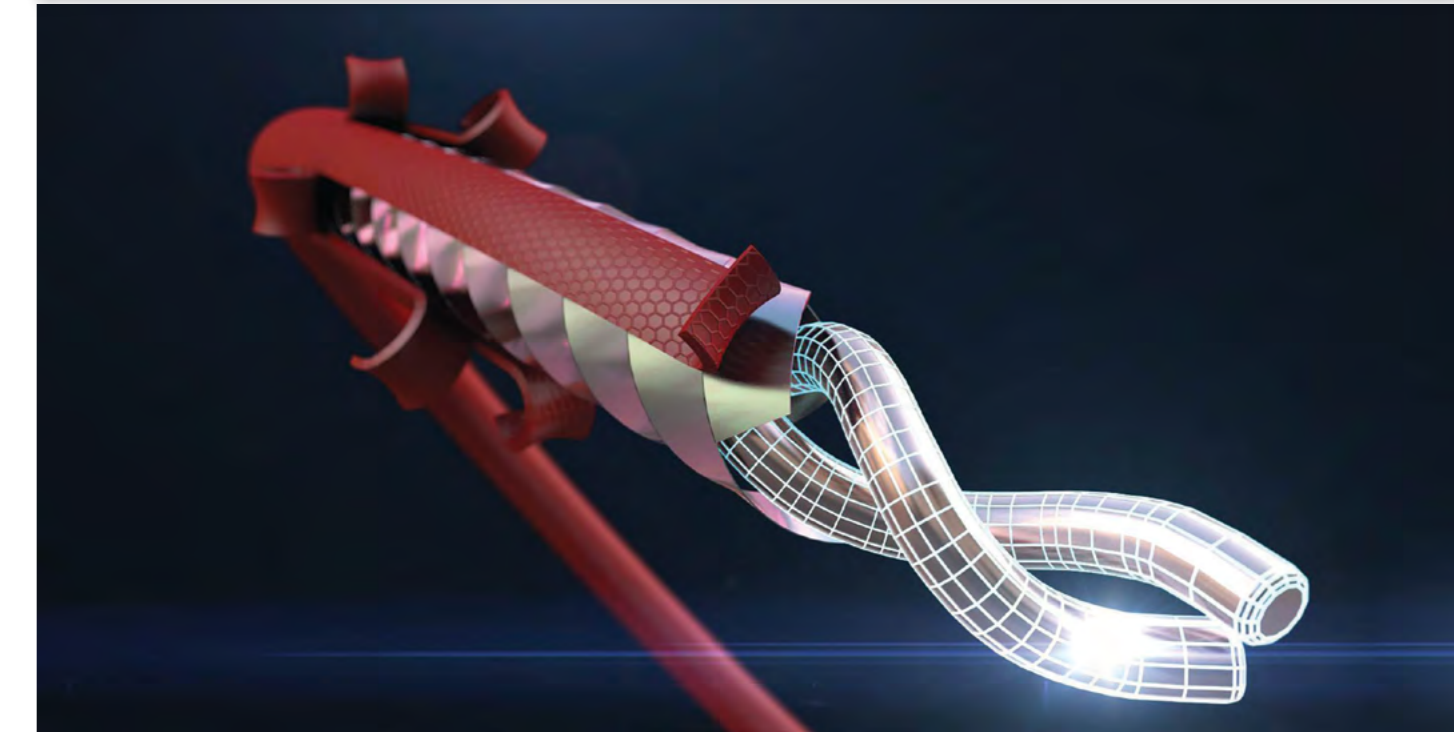
Ordering Information

Model	Description
ANY37N1	A full function evaluation board with various interfaces and rich functions for learning and evaluating AUTBUS, it is highly recommended to be used with SDK.

Email: sales@kyland.com
Phone: +86-10-88798888
www.kyland.com

KYLAND

AUTBUS Evaluation Boards



Time Sync. Network Real Time, Deterministic, More Nodes, Long Distance

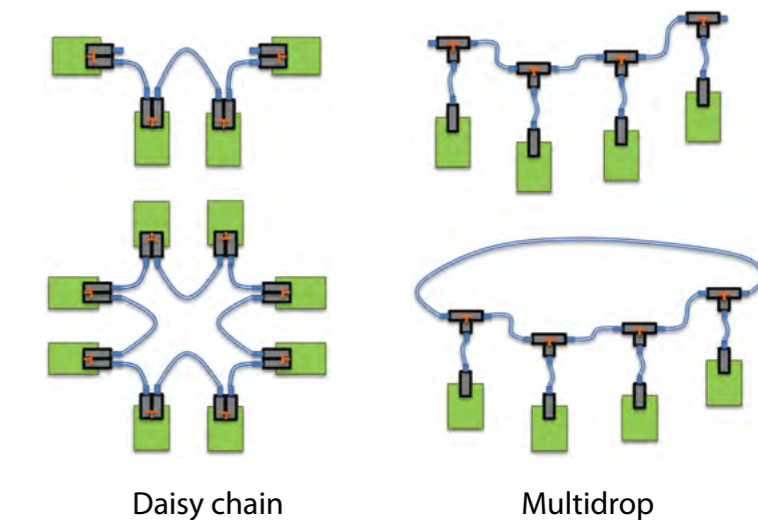
AUTBUS is designed for networking edge devices, such as, sensors, actuators, and controllers for cross industries, it can serve both mission critical and non-mission critical task simultaneously.

AUTBUS will be an international standard soon.

- IEC 61158-Type 28
- IEC 61784-CPF22

Features of AUTBUS

- Deterministic: Time sync. based communication mechanism
- High bandwidth: 100Mbps
- Media: twisted pair, polarity-insensitive
- More node: 254
- Long distance: 500m
- Flexible topology: daisy chain and multidrop
- Power over communication wires



Daisy chain

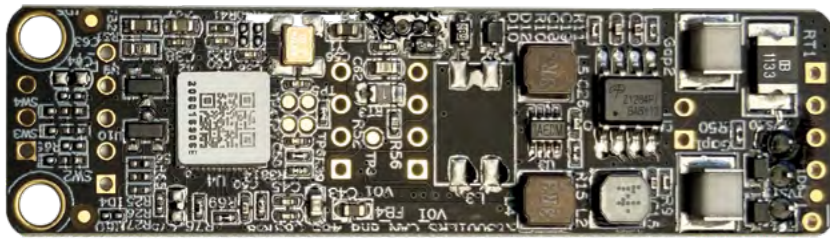
Multidrop

KYLAND

» ANY3212 AUTBUS/RS485 conversion module

ANY3212 is a conversion module from AUTBUS to RS485 based on the high performance AUTBUS SoC chip KY3001LRS. The product is used for devices with RS485 interfaces to connect to AUTBUS network, and seamlessly migrate from RS485 network to high-speed AUTBUS network.

ANY3212 module has an AUTBUS port, a RS485 port, and a DC power supply port. It is required to be used with ANY3822, the companion interface module of AUTBUS. The link power supply module ANY3811 is an option for delivering power and data on a single twisted pair wire of AUTBUS.



ANY3212

Product characteristics

AUTBUS

- Connector type: 2.54 pin connector
- ANY3822 companion module is required
- 100 Mbps @ 500 m

RS485

- Connector type: 2.54 pin connector
- Bitrate: 1,200 bps-12 Mbps
- Configurable with ATB-config

Indicator

- Power LED
- Working status LED

ANY3822 companion interface module is designed for amplifying signals, coupling signals to and from the AUTBUS network through the transformer.

ANY3811 link power supply module provides an option for transmission data and power simultaneously on a single twisted pair wire of AUTBUS.



ANY3822



ANY3811

Power supply

- Voltage range: DC 12 V
- Power: < 2 W
- Protection: overvoltage, overcurrent and reverse connection

Environmental conditions

- Working temperature: -40°C ~ 85°C
- Storage temperature: -40°C ~ 85°C
- Transport temperature: -40°C ~ 85°C
- Humidity range: 95% (without condensation)
- Altitude: below 3,500 m

ANY3212

Dimension: 65 mm x 18 mm x 16 mm
Weight: <100 g

» ANY3312 AUTBUS/ETH conversion module

ANY3312 is a conversion module from AUTBUS to Ethernet based on the high performance AUTBUS SoC chip KY3001LR. The product is used to connect devices with Ethernet interfaces to AUTBUS networks.

ANY3312 module has an AUTBUS port, an Ethernet port, and a DC power supply port. It is required to be used with ANY3822, the companion interface module of AUTBUS. The link power supply module ANY3811 is an option for delivering power and data on a single twisted pair wire of AUTBUS.



ANY3312

Product characteristics

AUTBUS

- Connector type: 2.54 pin connector
- ANY3822 companion module is required
- 100 Mbps @ 500 m

Ethernet

- A external RJ45 connector with a communication transformer is required
- Connector type: 2.54 pin connector
- Bitrate: 10/100 Mbps self-adaption

Indicator

- Power LED
- Working status LED

Ordering Information

Model	Description
ANY3112	ANY3112 is a conversion module from AUTBUS to CAN based on the high performance AUTBUS SoC chip KY3001LRS.
ANY3212	ANY3212 is a conversion module from AUTBUS to RS485 based on the high performance AUTBUS SoC chip KY3001LRS.
ANY3312	ANY3312 is a conversion module from AUTBUS to Ethernet based on the high performance AUTBUS SoC chip KY3001LR.
ANY3811	ANY3811 link power supply module provides an option for transmission data and power simultaneously on a single twisted pair wire of AUTBUS.
ANY3822	ANY3822 companion interface module is required for amplifying signals, coupling signals to and from the AUTBUS network through the transformer.

ANY3822 companion interface module is designed for amplifying signals, coupling signals to and from the AUTBUS network through the transformer.

ANY3811 link power supply module provides an option for transmission data and power simultaneously on a single twisted pair wire of AUTBUS.



ANY3822



ANY3811

Power supply

- Voltage range: DC 12 V
- Power: <2 W
- Protection: overvoltage, overcurrent and reverse connection

Environmental conditions

- Working temperature: -40°C ~ 85°C
- Storage temperature: -40°C ~ 85°C
- Transport temperature: -40°C ~ 85°C
- Humidity range: 95% (without condensation)
- Altitude: below 3,500 m

ANY3312

Dimension: 65 mm x 18 mm x 16 mm
Weight: <100 g

» ANY37N1 EVAL. Board

ANY37N1 is used for learning and evaluating AUTBUS, which is based on KY3001, the high performance AUTBUS SoC.

ANY37N1 provides various interfaces and rich functions: 1 AUTBUS, 3 RS485, 2 Ethernet, 2 mini-USB, 1 CAN, 3 SPI, 2 I2C, 2 PWM, 4 ADC, 2 DAC, and 1 HART etc. It is highly recommended to use with SDK.



Features

AUTBUS

- Transformer isolated
- 100Mbps@500meter

Ethernet

- Transformer isolated
- 2 10/100Base-T

CAN

- CAN 2.0 compatible
- Bitrate 250k, 500k, 1Mbps

RS485

- 3 channels
- Bitrate 1200bps – 12Mbps

USB

- 2 mini-USB

Power supply

- Voltage range: DC7V – DC35V
- Power: < 2 Watt
- Protection: over voltage, over current, revers connection

Indicators

- Power led
- Status Led

Ambient Condition

- Operation temperature: -40°C ~ 85°C
- Storage temperature: -40°C ~ 85°C
- Shipment temperature: -40°C ~ 85°C
- Size (WxHxD): 120mm x 120mm x 35mm
- Weight: < 100g
- Natural heat dissipation